

Vixen®

SX Half Pillar 2 Instruction Manual

Vixen Co., Ltd. 5-17-3 Higashitokorozawa, Tokorozawa, Saitama 359-0021, Japan
 Phone 04-2944-4141
<http://www.vixen.co.jp> Fax 04-2944-9722



Introduction

We thank you very much for your purchase of the Vixen SX Half Pillar 2. This product can be used for SX Equatorial Mount, SXD Equatorial Mount and Skypod Alt-Azimuth Mount, but not other Mounts which are not mentioned herein. When you attach SX Half Pillar 2 to your SX Equatorial Mount, SXD Equatorial Mount or Skypod Alt-Azimuth Mount, please also refer to the instruction manual of your mount.

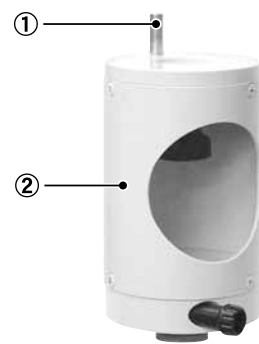
Parts Description

Checking Contents

SX Half Pillar 2 includes following listed parts.

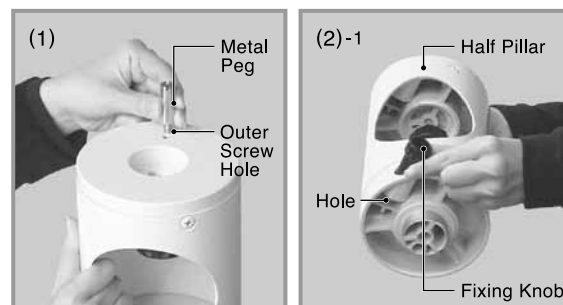
Make sure that your box contains the following parts.

①	Metal Peg
②	Half Pillar Body

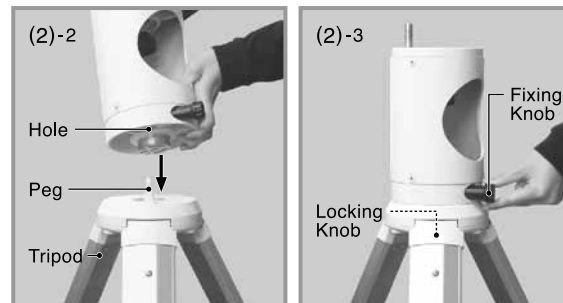


Installing SX Half Pillar 2 to SX Equatorial Mount or SXD Equatorial Mount

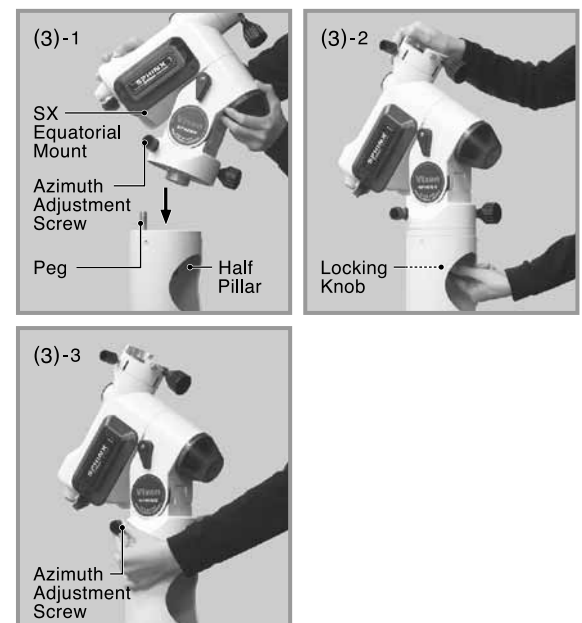
- (1) Screw the metal peg into the outer screw hole on the top of the half pillar by using a coin.
 * The inner screw hole on the top of the half pillar is not used.



- (2) After loosening the lock knob on the lower part of the half pillar, place the half pillar on the tripod head so that the metal peg on the tripod head comes underneath the through hole on the bottom of the half pillar. Screw the fixing bolt underneath the tripod head to secure the half pillar. Tighten the lock knob on the half pillar.

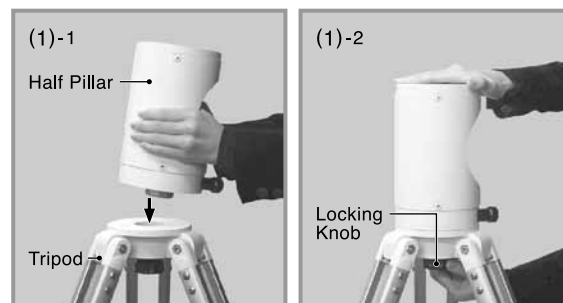


- (3) Attach the equatorial mount on the half pillar so that the metal peg on the top of the half pillar comes underneath the middle of the two azimuth adjustment knobs. Screw the fixing bolt on the inside of the half pillar to secure the equatorial mount. Then tighten the azimuth adjustment screws.



Installing SX Half Pillar 2 to Skypod Alt-Azimuth Mount

- (1) Hold the half pillar over the tripod head so that the centre shaft is above the matching hole.



- (2) Place the half pillar on the tripod head so that the two are flush. Tighten the locking knob on the underside of the tripod head firmly.
 * The inner screw hole on the top of the half pillar is not used.

