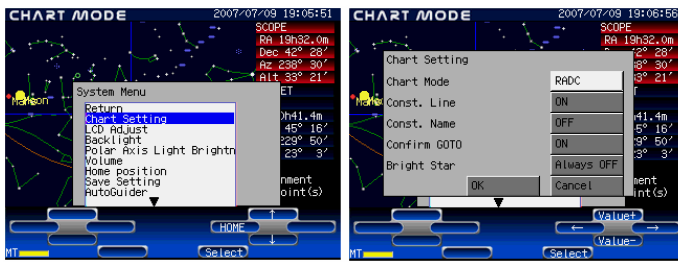


The names of prominent bright fixed stars and Messier objects can be displayed on the screen.

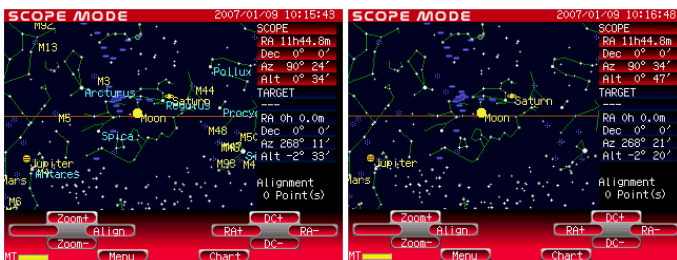
The manner of displaying the names can be selected from the following:



Press **Menu** to display the System Menu on the screen.

Choose **Chart Setting** with the **↑** · **↓** keys and press **Select** to enter.

The Chart Setting screen is displayed. Move the cursor with the **←** · **→** keys and select your setting preference with the **Value+**, **Value-** keys. Choose **OK** and press **Select** to enter.



Choosing **Always ON** will display the names anytime.

Choosing **Always OFF** will hide the names. *Target names will be displayed as an exception.

Choosing **Zoom 1** will display the names when the screen is zoomed in by one step from the minimum zoom position (the largest area displayed).

Choosing **Zoom 2** will display the names when the screen is zoomed in by two steps from the minimum zoom position (the largest area displayed).

Choosing **Zoom 3** will display the names when the screen is zoomed in by three steps from the minimum zoom position (the largest area displayed).



Zoom the star chart in by one step by pressing the **Zoom+** key once.

Zoom in by pressing the **Zoom+** key once again.

The prominent bright star names and Messier object numbers are displayed on the screen.